

Manifold Block

Model WHZ-MD

Model LZY-MD

Model LZ-MS

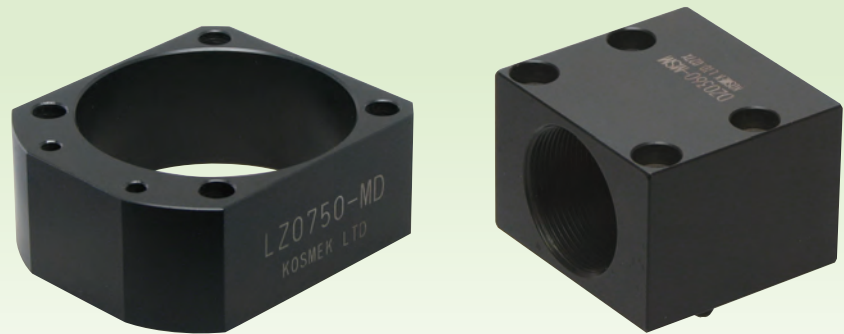
Model LZ-MP

Model TMZ-1MB

Model TMZ-2MB

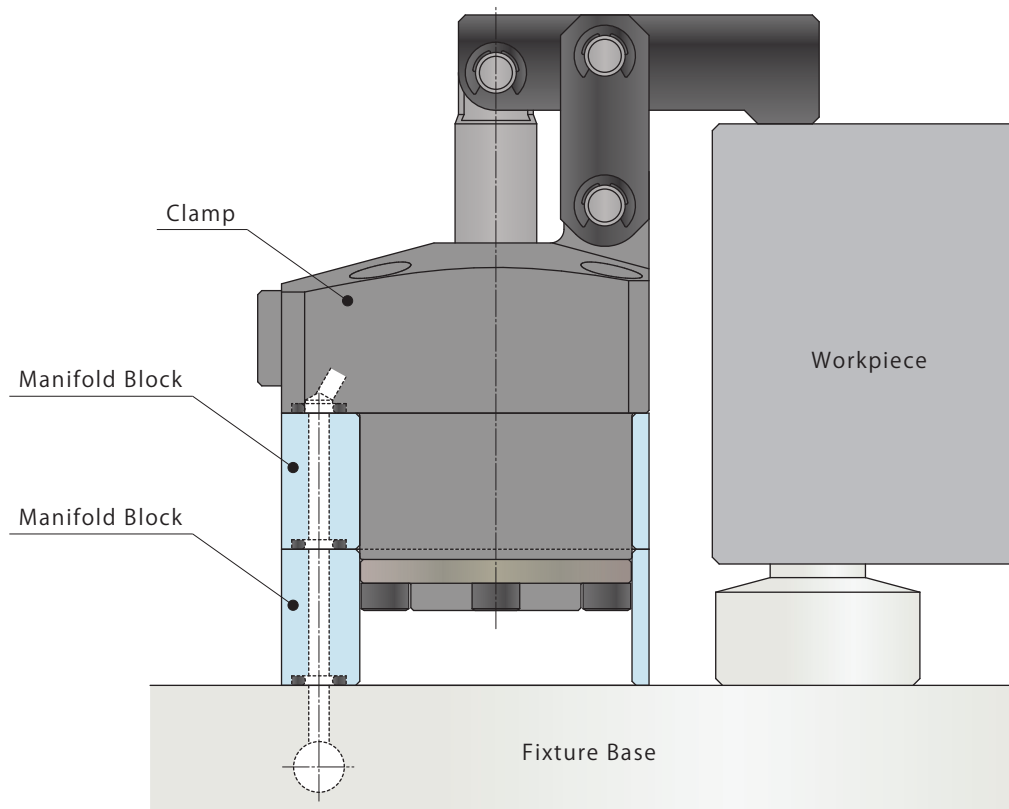
Model DZ-MG

Model DZ-MS



- **Manifold Block**

The mounting height of clamp is adjustable with the manifold block.



Applicable Model

Manifold Block Model No.	Corresponding Item Model No.
Model WHZ-MD	Model WCA Model WHA Model WCE Model WHE
Model LZY-MD	Model LKA Model LKE Model LHC Model LHS Model LKC Model LHA Model LHE Model LL
Model LZ-MS	Model LM Model LT Model LJ Model LG
Model LZ-MP	Model LC Model TC
Model TMZ-1MB	Model TMA-1
Model TMZ-2MB	Model TMA-2
Model DZ-MG□/MS□	Model DP

- High-Power Series
- Pneumatic Series
- Hydraulic Series
- Valve / Coupler Hydraulic Unit
- Manual Operation Accessories**
- Cautions / Others

Screw Locator
VXF

Manual Expansion Locating Pin
VX

Manifold Block

- WHZ-MD
- LZY-MD
- LZ-MS
- LZ-MP
- TMZ-1MB
- TMZ-2MB
- DZ-M

Manifold Block / Nut

- DZ-R
- DZ-C
- DZ-P
- DZ-B
- LZ-S
- LZ-SQ
- TNZ-S
- TNZ-SQ

Pressure Switch
JB

Pressure Gauge
JGA/JGB

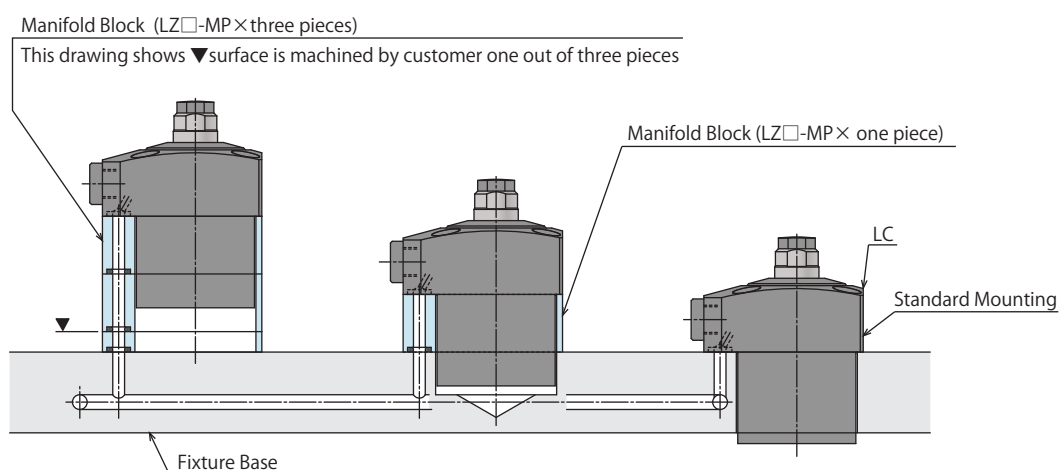
Manifold
JX

Coupler Switch
PS

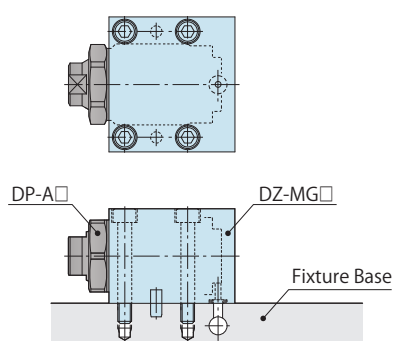
G-Thread Fitting

Application Examples

• Work Support (LC) Application Example



• Push Cylinder (DP) Application Example



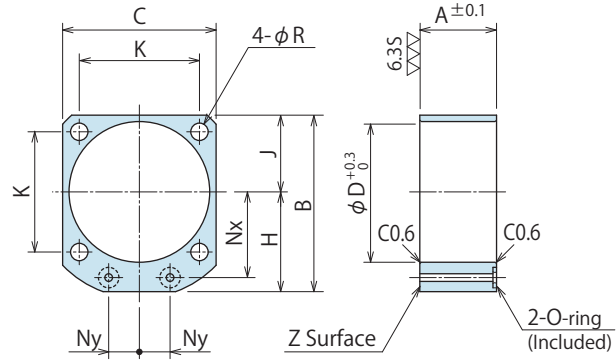
Manifold Block for WCA/WCE/WHA/WHE

Model No. Indication

WHZ 048 0 - MD

Size
(Refer to following table)

Design No.
(Revision Number)



(mm)

Model No.	WHZ0600-MD	WHZ0320-MD	WHZ0400-MD	WHZ0500-MD	WHZ0630-MD
Corresponding Item Model Number	WCE0601 WHE0600	WCA0321 WCE1001 WHA0320 WHE1000	WCA0401 WCE1601 WHA0400 WHE1600	WCA0501 WCE2501 WHA0500 WHE2500	WCA0631 WCE4001 WHA0630 WHE4000
A	23	25	27	31	35
B	54	60	67	77	88.5
C	45	50	58	68	81
D	40	46	54	64	77
H	31.5	35	38	43	48
J	22.5	25	29	34	40.5
K	34	39	45	53	65
Nx	26	28	31	36	41
Ny	9	10	13	15	20
R	5.5	5.5	5.5	6.5	6.5
O-ring	1BP5	1BP7	1BP7	1BP7	1BP7
Mass kg	0.1	0.1	0.1	0.2	0.2

- Notes
1. Material: A2017BE-T4
 2. Mounting bolts are not provided. Prepare mounting bolts according to the mounting height using the A dimensions as a reference.
 3. If thickness other than A is required, perform additional machining on surface Z. Please refer to the drawing.

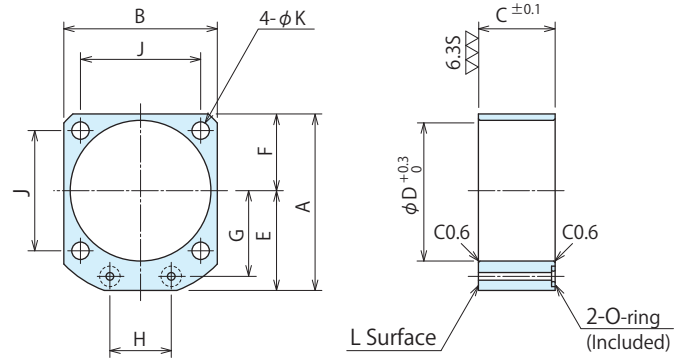
Manifold Block for LKA/LKC/LKE/LHA/LHC/LHE/LHS/LL

Model No. Indication

LZY 048 0 - MD

Size
(Refer to following table)

Design No.
(Revision Number)



(mm)

Model No.	LZY0360-MD	LZY0400-MD	LZY0480-MD	LZY0550-MD	LZY0650-MD	LZY0750-MD	LZY0900-MD	LZY1050-MD
Corresponding Item Model Number	LKA0360 / LKE0360 LHA0360 / LHC0360 LHE0360 / LHS0360 LLO360	LKA0400 / LKC0400 LKE0400 / LHA0400 LHC0400 / LHE0400 LHS0400 / LLO400	LKA0480 / LKC0480 LKE0480 / LHA0480 LHC0480 / LHE0480 LHS0480 / LLO480	LKA0550 / LKC0550 LKE0550 / LHA0550 LHC0550 / LHE0550 LHS0550 / LLO550	LKA0650 / LKC0650 LHA0650 / LHC0650 LHS0650 LLO650	LKA0750 LHA0750 LHS0750 LLO750	LKA0900 LHA0900 LHS0900 LLO900	LKA1050 LHA1050 LHS1050 LLO1050
A	49	54	61	69	81	92	107	122
B	40	45	51	60	70	80	95	110
C	20	20	27	30	32	37	45	50
D	36	40	48	55	65	75	90	105
E	29	31.5	35.5	39	46	52	59.5	67
F	20	22.5	25.5	30	35	40	47.5	55
G	23.5	26	30	33.5	39.5	45	52.5	60
H	16	18	22	24	30	32	37	45
J	31.4	34	40	47	55	63	75	88
K	4.5	5.5	5.5	6.8	6.8	9	11	14
O-ring	1BP5	1BP5	1BP5	1BP5	1BP7	1BP7	1BP7	1BP7
Mass kg	0.2	0.2	0.3	0.4	0.5	0.8	1.2	1.7

- Notes
1. Material: S45C
 2. Mounting bolts are not provided. Prepare mounting bolts according to the mounting height using the C dimensions as a reference.
 3. If thickness other than C is required, perform additional machining on surface L. Please refer to the drawing.

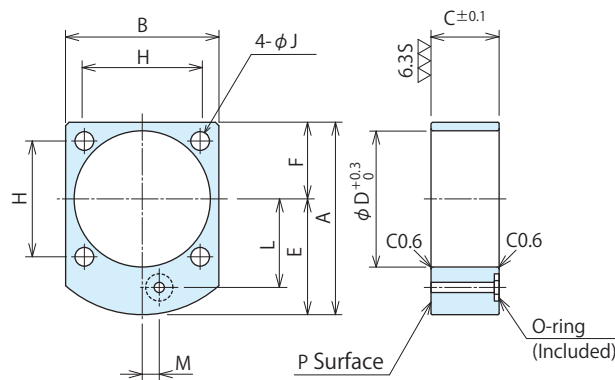
Manifold Block for LM/LJ/LT/LG

Model No. Indication

LZ 048 0 - MS

Size
(Refer to following table)

Design No.
(Revision Number)



(mm)

Model No.	LZ0360-MS	LZ0400-MS	LZ0480-MS	LZ0550-MS	LZ0650-MS	LZ0750-MS	LZ0900-MS	LZ1050-MS
Corresponding Item Model Number	LT0360 LM0360	LT0400 LM0400	LT0480 LM0480	LT0550 LM0550	LT0650 LM0650	LT0750 LM0750	LG0900 LJ0902	LG1050 LJ1052
A	51.5	56.5	62	70	82	93	107	122
B	40	45	51	60	70	80	95	110
C	20	20	27	30	32	37	45	50
D	36	40	48	55	65	75	90	105
E	31.5	34	36.5	40	47	53	59.5	67
F	20	22.5	25.5	30	35	40	47.5	55
H	31.4	34	40	47	55	63	75	88
J	4.5	5.5	5.5	6.8	6.8	9	11	14
L	23.5	26	30	33.5	39.5	45	52.5	60
M	5	5	0	0	0	0	0	0
O-ring	1BP5	1BP5	1BP5	1BP5	1BP7	1BP7	1BP7	1BP7
Mass kg	0.2	0.2	0.3	0.4	0.5	0.8	1.2	1.7

- Notes
1. Material: S45C
 2. Mounting bolts are not provided. Prepare mounting bolts according to the mounting height using the C dimensions as a reference.
 3. If thickness other than C is required, perform additional machining on surface L. Please refer to the drawing.

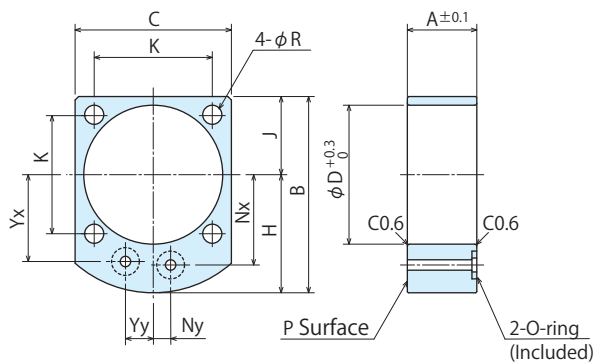
Manifold Block for LC/TC

Model No. Indication

LZ 048 0 - MP

Size
(Refer to following table)

Design No.
(Revision Number)



(mm)

Model No.	LZ0400-MP	LZ0480-MP	LZ0550-MP	LZ0650-MP	LZ0750-MP	LZ0900-MP
Corresponding Item Model Number	LC0402 TC0402	LC0482 TC0482	LC0552 TC0552	LC0652 TC0652	LC0752 TC0752	LC0902
A	20	27	30	32	37	45
B	56.5	62	70	82	93	107
C	45	51	60	70	80	95
D	40	48	55	65	75	90
H	34	36.5	40	47	53	59.5
J	22.5	25.5	30	35	40	47.5
K	34	40	47	55	63	75
Nx	26	30	33.5	39.5	45	52.5
Ny	5	0	0	0	0	0
R	5.5	5.5	6.8	6.8	9	11
Yx	25	28	31	37	42.5	50
Yy	8	11	13	14	15	15
O-ring	1BP5	1BP5	1BP5	1BP7	1BP7	1BP7
Mass kg	0.2	0.3	0.4	0.5	0.8	1.2

- Notes
1. Material: S45C
 2. Mounting bolts are not provided. Prepare mounting bolts according to the mounting height using the A dimensions as a reference.
 3. If thickness other than A is required, perform additional machining on surface P. Please refer to the drawing.

- High-Power Series
- Pneumatic Series
- Hydraulic Series
- Valve / Coupler Hydraulic Unit
- Manual Operation Accessories
- Cautions / Others
- Screw Locator
 - VXF
- Manual Expansion Locating Pin
 - VX
- Manifold Block
 - WHZ-MD
 - LZY-MD
 - LZ-MS
 - LZ-MP
 - TMZ-1MB
 - TMZ-2MB
 - DZ-M
- Manifold Block / Nut
 - DZ-R
 - DZ-C
 - DZ-P
 - DZ-B
 - LZ-S
 - LZ-SQ
 - TNZ-S
 - TNZ-SQ
- Pressure Switch
 - JB
- Pressure Gauge
 - JGA/JGB
- Manifold
 - JX
- Coupler Switch
 - PS
- G-Thread Fitting

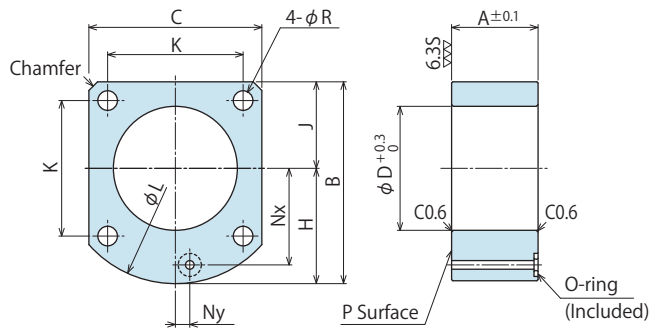
Manifold Block for TMA-1

Model No. Indication

TMZ 040 0 - 1MB

Size
(Refer to following table)

Design No.
(Revision Number)



(mm)

Model No.	TMZ0250-1MB	TMZ0400-1MB	TMZ0600-1MB	TMZ1000-1MB	TMZ1600-1MB	TMZ2500-1MB	TMZ3200-1MB
Corresponding Item Model No.	TMA0250-1	TMA0400-1	TMA0600-1	TMA1000-1	TMA1600-1	TMA2500-1	TMA3200-1
A	18	21	24	28	35	42	46
B	56.5	62	69	83	95	110	122
C	45	51	60	73	85	100	110
D	33	36	43	48	60	70	85
H	34	36.5	39	46.5	52.5	60	67
J	22.5	25.5	30	36.5	42.5	50	55
K	34	40	47	57	65	75	88
L	68	73	80	97	112	129	147
Nx	26	30	33.5	40	45	52.5	60
Ny	5	0	0	0	0	0	0
R	5.5	5.5	6.8	9	11	14	14
Chamfer	3	3	(φ80)	(φ97)	(φ112)	(φ129)	(φ147)
O-ring	1BP5	1BP5	1BP5	1BP5	1BP7	1BP7	1BP7
Mass kg	0.2	0.3	0.5	0.9	1.4	2.2	2.6

- Notes
1. Material: S45C
 2. Mounting bolts are not provided. Prepare mounting bolts according to the mounting height using the A dimensions as a reference.
 3. If thickness other than A is required, perform additional machining on surface P. Please refer to the drawing.

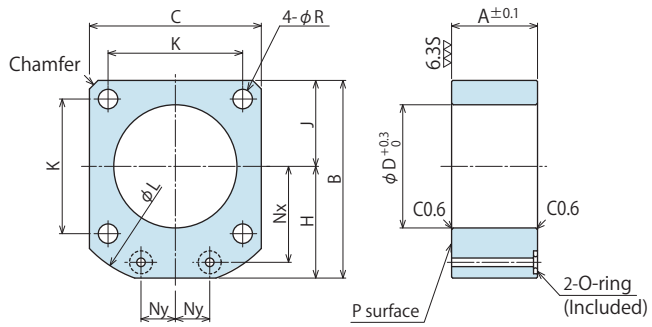
Manifold Block for TMA-2

Model No. Indication

TMZ 048 0 - 2MB

Size
(Refer to following table)

Design No.
(Revision Number)



(mm)

Model No.	TMZ0250-2MB	TMZ0400-2MB	TMZ0600-2MB	TMZ1000-2MB	TMZ1600-2MB	TMZ2500-2MB	TMZ3200-2MB
Corresponding Item Model No.	TMA0250-2	TMA0400-2	TMA0600-2	TMA1000-2	TMA1600-2	TMA2500-2	TMA3200-2
A	15	16	18	20	24	28	32
B	54	61	69	82.5	94.5	109.5	122
C	45	51	60	73	85	100	110
D	33	36	43	48	60	70	85
H	31.5	35.5	39	46	52	59.5	67
J	22.5	25.5	30	36.5	42.5	50	55
K	34	40	47	57	65	75	88
L	68	75	83	100	113	133	147
Nx	26	30	33.5	40	45	52.5	60
Ny	9	10	12	15	16	18.5	20
R	5.5	5.5	6.8	9	11	14	14
Chamfer	3	3	3	4	5	8	(φ147)
O-ring	1BP5	1BP5	1BP5	1BP5	1BP7	1BP7	1BP7
Mass kg	0.2	0.3	0.4	0.6	0.9	1.5	1.8

- Notes
1. Material: S45C
 2. Mounting bolts are not provided. Prepare mounting bolts according to the mounting height using the A dimensions as a reference.
 3. If thickness other than A is required, perform additional machining on surface P. Please refer to the drawing.

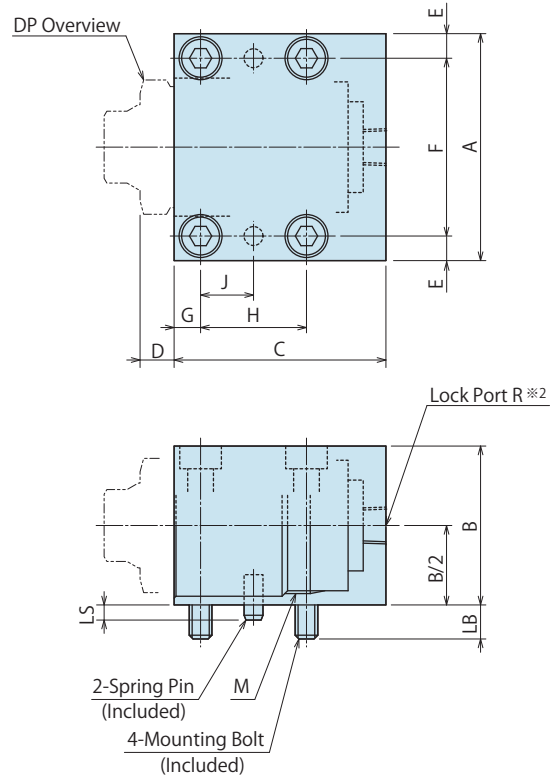
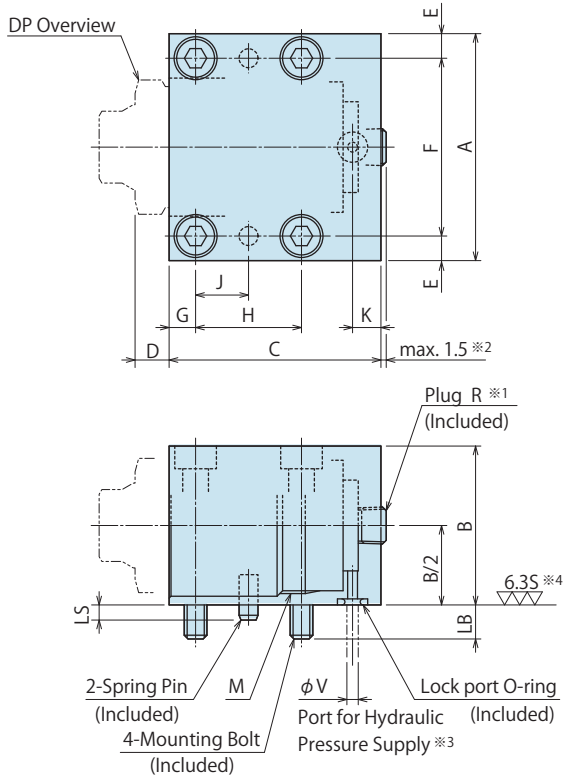
Manifold Block for DP

Model No. Indication



※The drawing below shows DZ□0-MG□ (Gasket option).

※The drawing below shows DZ□0-MS□ (Piping option).



Notes

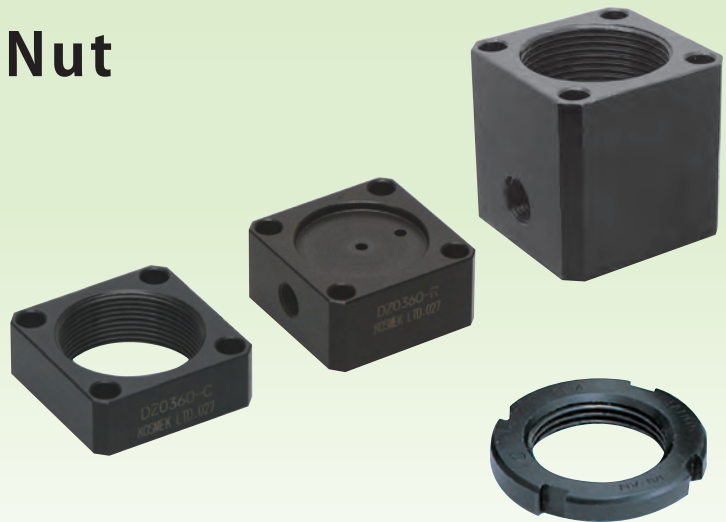
- Material : S45C
- ※1. G-option the R-thread plug is screwed in. There will be some variation in how far the plug protrudes.
- ※2. Plug is not included with the S-option.
- ※3. Shows the recommendation for the hole drilled by the customer for the supply of hydraulic pressure. Make sure there are no burrs around the connection and no cutting chips or other foreign material inside.
- ※4. The surface touching the O-ring should have a roughness of $\sqrt{6.35}$.

Model No.	DZ0160-MG□									DZ0220-MG□			DZ0240-MG□			DZ0300-MG□			DZ0360-MG□			DZ0450-MG□			DZ0550-MG□			DZ0650-MG□			DZ0800-MG□					
	DZ0160-MS□									DZ0220-MS□			DZ0240-MS□			DZ0300-MS□			DZ0360-MS□			DZ0450-MS□			DZ0550-MS□			DZ0650-MS□			DZ0800-MS□					
Stroke Code	S	M	L	S	M	L	S	M	L	S	M	L	S	M	L	S	M	L	S	M	L	S	M	L	S	M	L	S	M	L	S	M	L	S	M	L
Corresponding Item Model No.	DP0160-□									DP0221-□			DP0241-□			DP0301-□			DP0361-□			DP0451-□			DP0551-□			DP0651-□			DP0801-□					
Model No.	Stroke Code									S	M	L	S	M	L	S	M	L	S	M	L	S	M	L	S	M	L	S	M	L	S	M	L	S	M	L
A	32			38			45			50			60			75			90			105			120											
B	22			28			32			38			42			52			62			72			88											
C	34	40	49	32.5	38.5	51.5	35	42.5	59	38.5	45.5	65	43	56	77	50	63	85.5	56	69.5	92	65	79	108.5	70	88	119									
D	6			8			8			9			9			13			13			15			15											
E	4.5			4.5			6			6			6.5			8.5			10			11			11											
F	23			29			33			38			47			58			70			83			98											
G	5			5			6			6			7			8			9			11			11											
H	12	18	12	18	12	18	12	18	16	22	18	22	18	28	20	30	24	36	30	36	30	42	30	42	34	52	34									
J	6	9	6	9	6	9	6	9	8	11	9	11	9	14	10	15	12	18	15	18	15	21	15	21	17	26	17									
K	7.5			7.5			7.5			7.5			7.5			11.5			11.5			11.5			11.5											
LB	7			6			8			7			9			11			13			15			15											
LS	3			3			3			4			4			4			4			6			7											
M (Nominal × Pitch)	M16×1.5			M22×1.5			M24×1.5			M30×1.5			M36×1.5			M45×1.5			M55×2			M65×2			M80×2											
R	Rc1/8			Rc1/8			Rc1/8			Rc1/8			Rc1/8			Rc1/4			Rc1/4			Rc1/4			Rc1/4											
Mounting Bolt	M4×0.7×25			M4×0.7×30			M5×0.8×35			M5×0.8×40			M6×1×45			M8×1.25×55			M10×1.5×65			M12×1.75×75			M12×1.75×90											
O-ring	1BP5			1BP5			1BP5			1BP5			1BP5			1BP7			1BP7			1BP7			1BP7											
Spring Pin	φ3×8			φ3×8			φ3×8			φ5×12			φ5×12			φ6×12			φ6×12			φ8×16			φ10×20											
V	3			3			3			5			5			5			5			5			5											
Mass	kg	0.15	0.15	0.2	0.2	0.2	0.3	0.3	0.4	0.5	0.4	0.5	0.6	0.6	0.7	1	1	1.2	1.7	1.5	1.8	2.5	2.2	2.8	3.8	3.2	4	5.5								

- High-Power Series
- Pneumatic Series
- Hydraulic Series
- Valve / Coupler Hydraulic Unit
- Manual Operation Accessories
- Cautions / Others
- Screw Locator
 - VXF
- Manual Expansion Locating Pin
 - VX
- Manifold Block
 - WHZ-MD
 - LZY-MD
 - LZ-MS
 - LZ-MP
 - TMZ-1MB
 - TMZ-2MB
 - DZ-M
- Manifold Block / Nut
 - DZ-R
 - DZ-C
 - DZ-P
 - DZ-B
 - LZ-S
 - LZ-SQ
 - TNZ-S
 - TNZ-SQ
- Pressure Switch
 - JB
- Pressure Gauge
 - JGA/JGB
- Manifold
 - JX
- Coupler Switch
 - PS
- G-Thread Fitting

Manifold Block / Nut

- Model DZ-R
- Model DZ-C
- Model DZ-P
- Model DZ-B
- Model LZ-S
- Model LZ-SQ
- Model TNZ-S
- Model TNZ-SQ

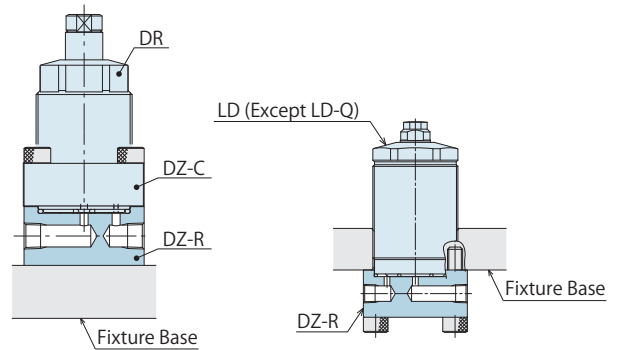


Applicable Model/Application Examples

DZ-R

Manifold Block for
DR/LD/WNC

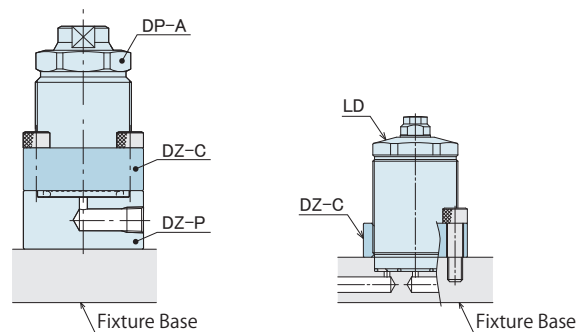
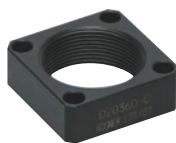
Corresponding Item Model No. : DR / LD / WNC



DZ-C

Flanged Nut for
DP/DR/DS/DT/LD/WNC

Corresponding Item Model No. : DP / DR / DS / DT / LD / WNC

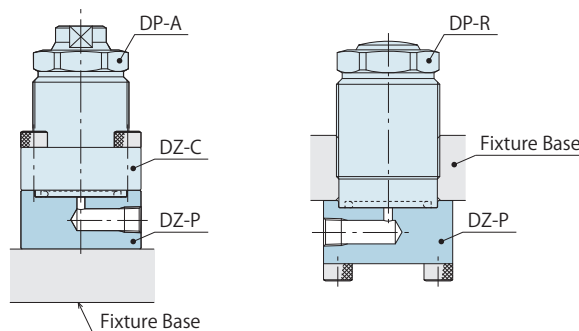


Applicable Model/Application Examples

DZ-P

Manifold Block for DP

Corresponding Item Model No. : DP



- High-Power Series
- Pneumatic Series
- Hydraulic Series
- Valve / Coupler Hydraulic Unit
- Manual Operation Accessories
- Cautions / Others

- Screw Locator
 - VXF
- Manual Expansion Locating Pin
 - VX

- Manifold Block
 - WHZ-MD
 - LZY-MD
 - LZ-MS
 - LZ-MP
 - TMZ-1MB
 - TMZ-2MB
 - DZ-M

- Manifold Block / Nut
- DZ-R
- DZ-C
- DZ-P
- DZ-B
- LZ-S
- LZ-SQ
- TNZ-S
- TNZ-SQ

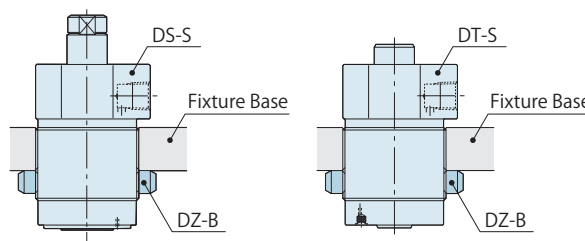
- Pressure Switch
 - JB
- Pressure Gauge
 - JGA/JGB
- Manifold
 - JX
- Coupler Switch
 - PS

- G-Thread Fitting

DZ-B

Bulkhead Nut for DP/DR/DS/DT

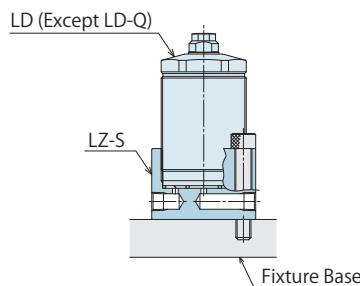
Corresponding Item Model No. : DP / DR / DS / DT



LZ-S

Manifold Block for LD/WNC

Corresponding Item Model No. : LD / WNC



TNZ-S

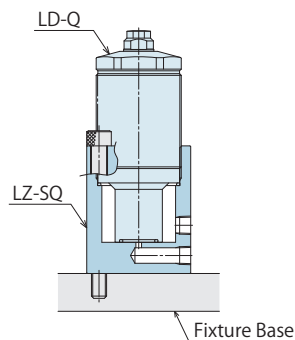
Manifold Block for TNC

Corresponding Item Model No. : TNC

LZ-SQ

Manifold Block for LD-Q

Corresponding Item Model No. : LD-Q



TNZ-SQ

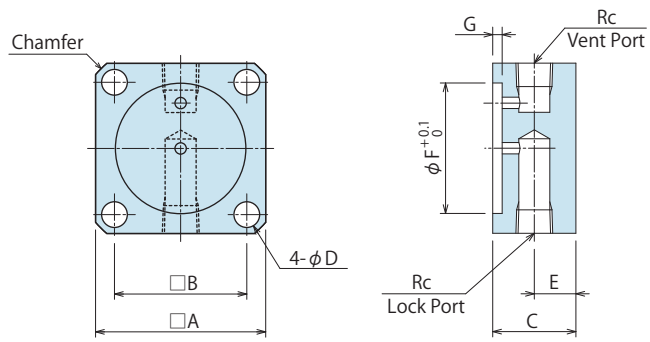
Manifold Block for TNC-Q

Corresponding Item Model No. : TNC-Q

Manifold Block for DR/LD/WNC

Model No. Indication

DZ 036 0 - R
 Size (Refer to following table)
 Design No. (Revision Number)



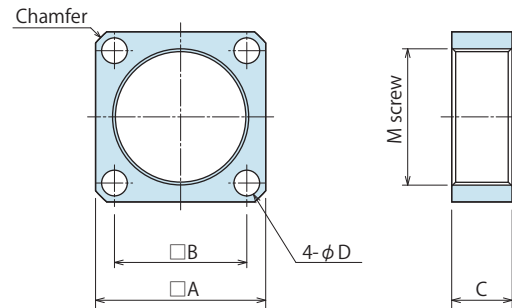
Model No.	DZ0220-R	DZ0240-R	DZ0260-R	DZ0300-R	DZ0360-R	DZ0450-R	DZ0550-R	DZ0600-R	DZ0650-R	DZ0800-R
Corresponding Item Model Number	DR0221 LD0222 WNC0350	DR0241 -	- LD0262*1 WNC0600	DR0301 LD0302*1 WNC1000	DR0361 LD0362*1 WNC1600	DR0451 LD0452*1 WNC3000	DR0551 -	- WNC6000	DR0651 -	DR0801 -
A	28	32	35	38	45	55	70	75	80	90
B	21	23	26	29	35	42	54	59	62	72
C	19	19	19	22	22	25	25	25	25	28
D	4.5	5.5	5.5	5.5	6.8	9	11	11	14	14
E	9.5	9.5	9.5	11	11	12.5	12.5	12.5	12.5	14
F	20.5	22.5	24.5	28.5	34.5	43.5	53	58	63	78
G	2.5	2.5	2.5	2.5	2.5	3.5	3.5	3.5	3.5	4
Rc	Rc1/8	Rc1/8	Rc1/8	Rc1/8	Rc1/8	Rc1/4	Rc1/4	Rc1/4	Rc1/4	Rc1/4
Chamfer	C2	C3	C3	C3	C3	C4	C5	C4	C5.5	C5.5
Mass kg	0.1	0.2	0.2	0.2	0.3	0.6	0.8	0.9	1.0	1.5

- Notes 1. Material: S45C
 2. Mounting bolts are not provided. Prepare mounting bolts according to the mounting height using the C dimensions as a reference.
 *1. It is not applicable for LD-Q: work support hydraulic advance long stroke option. (Please select from LZ-SQ.)

Flange Nut for DP/DR/DS/DT/LD/WNC

Model No. Indication

DZ 036 0 - C
 Size (Refer to following table)
 Design No. (Revision Number)



Model No.	DZ0160-C	DZ0220-C	DZ0240-C	DZ0260-C	DZ0300-C	DZ0360-C	DZ0450-C	DZ0550-C	DZ0600-C	DZ0650-C	DZ0800-C
Corresponding Item Model Number	DP0160 -	DP0221 DR0221 DS0221 -	DP0241 DR0241 DS0241 -	- LD0262 WNC0600	DP0301 DR0301 DS0301 -	DP0361 DR0361 DS0361 LD0362 WNC1600	DP0451 DR0451 DS0451 DT0361 DT0451 LD0452 WNC3000	DP0551 DR0551 DS0551 DT0551 -	- WNC6000	DP0651 DR0651 DS0651 DT0651 -	DP0801 DR0801 DS0801 DT0801 -
A	25	28	32	35	38	45	55	70	75	80	90
B	18	21	23	26	29	35	42	54	59	62	72
C	12	14	14	14	15	16	18	20	22	25	25
D	4.5	4.5	5.5	5.5	5.5	6.8	9	11	11	14	14
M (Nominal x Pitch)	M16x1.5	M22x1.5	M24x1.5	M26x1.5	M30x1.5	M36x1.5	M45x1.5	M55x2	M60x2	M65x2	M80x2
Chamfer	C2	C2	C3	C3	C3	C3	C4	C5	C4	C5.5	C5.5
Mass kg	0.04	0.04	0.06	0.07	0.08	0.1	0.2	0.4	0.45	0.5	0.6

- Notes 1. Material: S45C
 2. Mounting bolts are not provided. Prepare mounting bolts according to the mounting height using the C dimensions as a reference.

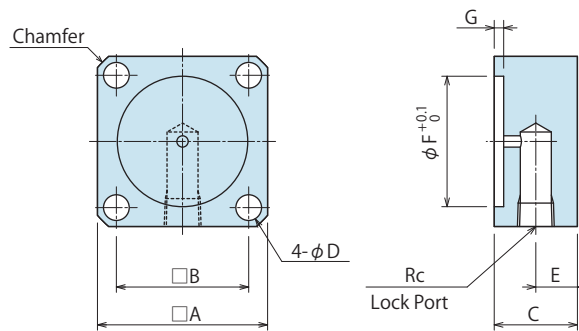
Manifold Block for DP

Model No. Indication

DZ 036 0 - P

Size
(Refer to following table)

Design No.
(Revision Number)



(mm)

Model No.	DZ0160-P	DZ0220-P	DZ0240-P	DZ0300-P	DZ0360-P	DZ0450-P	DZ0550-P	DZ0650-P	DZ0800-P
Corresponding Item Model Number	DP0160	DP0221	DP0241	DP0301	DP0361	DP0451	DP0551	DP0651	DP0801
A	25	28	32	38	45	55	70	80	90
B	18	21	23	29	35	42	54	62	72
C	19	19	19	22	22	25	25	25	28
D	4.5	4.5	5.5	5.5	6.8	9	11	14	14
E	9.5	9.5	9.5	11	11	12.5	12.5	12.5	14
F	14.5	20.5	22.5	28.5	34.5	43.5	53	63	78
G	1.5	2.5	2.5	2.5	2.5	3.5	3.5	3.5	4
Rc	Rc1/8	Rc1/8	Rc1/8	Rc1/8	Rc1/8	Rc1/4	Rc1/4	Rc1/4	Rc1/4
Chamfer	C2	C2	C3	C3	C3	C4	C5	C5.5	C5.5
Mass kg	0.1	0.1	0.2	0.2	0.3	0.6	0.8	1.0	1.5

- Notes
1. Material : S45C
 2. Mounting bolts are not provided. Prepare mounting bolts according to the mounting height using the C dimensions as a reference.

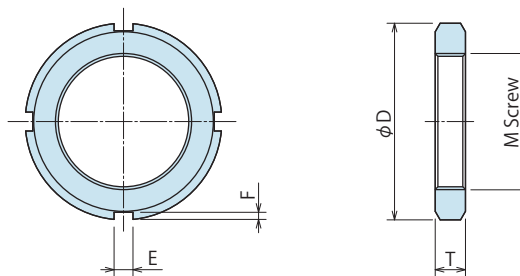
Bulkhead Nut for DP/DR/DS/DT

Model No. Indication

DZ 036 0 - B

Size
(Refer to following table)

Design No.
(Revision Number)



(mm)

Model No.	DZ0160-B	DZ0220-B	DZ0240-B	DZ0300-B	DZ0360-B	DZ0450-B	DZ0550-B	DZ0650-B	DZ0800-B
Corresponding Item Model Number	DP0160	DP0221	DP0241	DP0301	DP0361	DP0451	DP0551	DP0651	DP0801
	-	DR0221	DR0241	DR0301	DR0361	DR0451	DR0551	DR0651	DR0801
	-	DS0221	DS0241	DS0301	DS0361	DS0451	DS0551	DS0651	DS0801
	-	-	-	-	DT0361	DT0451	DT0551	DT0651	DT0801
D	25	32	38	45	52	65	75	85	105
E	4	5	5	5	5	6	7	7	8
F	2	2	2	2	2	2.5	3	3	3.5
M (Nominal × Pitch)	M16×1.5	M22×1.5	M24×1.5	M30×1.5	M36×1.5	M45×1.5	M55×2	M65×2	M80×2
T	5	6	7	7	8	10	11	12	15
Mass kg	0.02	0.03	0.03	0.05	0.08	0.1	0.2	0.3	0.5

- Notes
1. Material : S45C

- High-Power Series
- Pneumatic Series
- Hydraulic Series
- Valve / Coupler Hydraulic Unit
- Manual Operation Accessories
- Cautions / Others

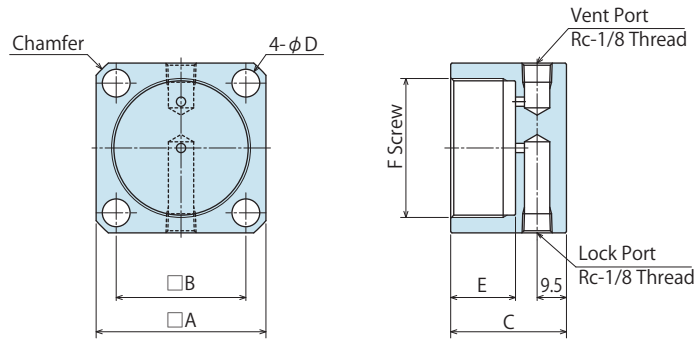
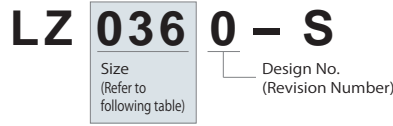
- Screw Locator
 - VXF
- Manual Expansion Locating Pin
 - VX
- Manifold Block
 - WHZ-MD
 - LZY-MD
 - LZ-MS
 - LZ-MP
 - TMZ-1MB
 - TMZ-2MB
 - DZ-M

- Manifold Block / Nut
 - DZ-R
 - DZ-C
 - DZ-P
 - DZ-B
 - LZ-S
 - LZ-SQ
 - TNZ-S
 - TNZ-SQ

- Pressure Switch
 - JB
- Pressure Gauge
 - JGA/JGB
- Manifold
 - JX
- Coupler Switch
 - PS
- G-Thread Fitting

Manifold Block for LD/WNC

Model No. Indication

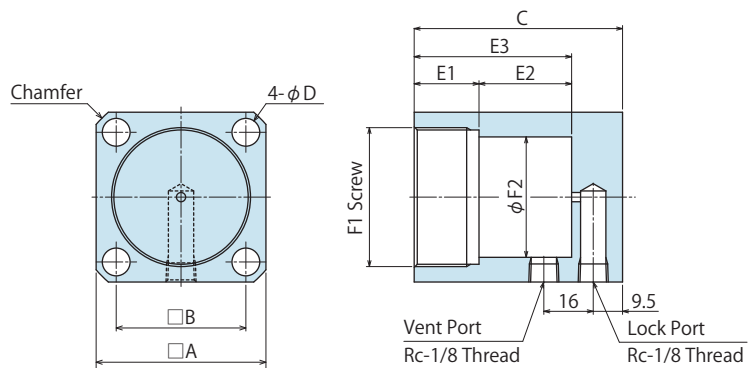
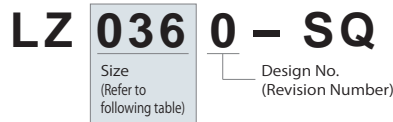


Model No.	LZ0220-S	LZ0260-S	LZ0300-S	LZ0360-S	LZ0450-S	LZ0600-S
Corresponding Item Model Number	LD0222 WNC0350	LD0262 (Except Q option) ※1 WNC0600	LD0302 (Except Q option) ※1 WNC1000	LD0362 (Except Q option) ※1 WNC1600	LD0452 (Except Q option) ※1 WNC3000	- WNC6000
A	28	35	38	45	55	75
B	21	26	29	35	42	59
C	30.5	32.5	33.5	34.5	37.5	41.5
D	4.5	5.5	5.5	6.8	9	11
E	14	16	17	18	21	25
F (Nominal × Pitch)	M22×1.5	M26×1.5	M30×1.5	M36×1.5	M45×1.5	M60×2
Chamfer	C2	C3	C3	C3	C4	C4
Mass kg	0.12	0.20	0.24	0.34	0.52	1.12

- Notes
1. Material: S45C
 2. Mounting bolts are not provided. Prepare mounting bolts according to the mounting height using the C dimensions as a reference.
- ※1. It is not applicable for LD-Q: work support hydraulic advance long stroke option. (Please select from LZ-SQ.)

Manifold Block for LD-Q

Model No. Indication



Model No.	LZ0260-SQ	LZ0300-SQ	LZ0360-SQ	LZ0450-SQ
Corresponding Item Model Number	LD0262-Q ※2	LD0302-Q ※2	LD0362-Q ※2	LD0452-Q ※2
A	35	38	45	55
B	26	29	35	42
C	49.5	53	60.5	67.5
D	5.5	5.5	6.8	9
E1	16	17	18	21
E2	17	19.5	26	30
E3	33	36.5	44	51
F1 (Nominal × Pitch)	M26×1.5	M30×1.5	M36×1.5	M45×1.5
F2	20	24	30	39
Chamfer	C3	C3	C3	C4
Mass kg	0.31	0.38	0.58	0.89

- Notes
1. Material: S45C
 2. Mounting bolts are not provided. Prepare mounting bolts according to the mounting height using the C dimensions as a reference.
- ※1. It is not applicable for LD-EQ work support hydraulic advance long stroke option. (Please select from LZ-S.)

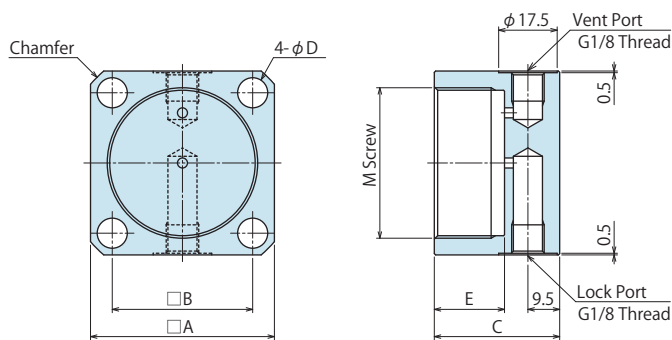
Manifold Block for TNC

Model No. Indication

TNZ 060 0 - S

Size
(Refer to
following table)

Design No.
(Revision Number)



(mm)

Model No.	TNZ0400-S	TNZ0600-S	TNZ1000-S	TNZ1600-S
Corresponding Item Model Number	TNC0400	TNC0600	TNC1000	TNC1600
A	35	38	45	55
B	26	29	35	42
C	32.5	33.5	34.5	37.5
D	5.5	5.5	6.8	9
E	16	17	18	21
M (Nominal × Pitch)	M26×1.5	M30×1.5	M36×1.5	M45×1.5
Chamfer	C3	C3	C3	C4
Mass kg	0.20	0.23	0.34	0.52

- Notes
1. Material : S45C
 2. Mounting bolts are not provided. Prepare mounting bolts according to the mounting height using the C dimensions as a reference.

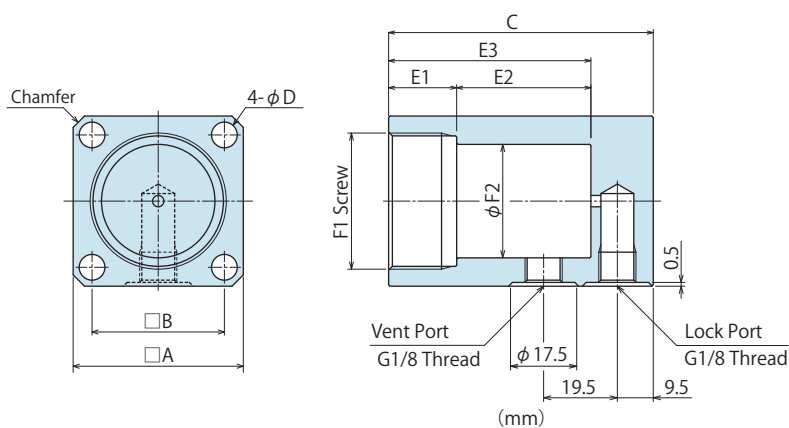
Manifold Block for TNC-Q

Model No. Indication

TNZ 060 0 - SQ

Size
(Refer to
following table)

Design No.
(Revision Number)



(mm)

Model No.	TNZ0400-SQ	TNZ0600-SQ	TNZ1000-SQ	TNZ1600-SQ
Corresponding Item Model Number	TNC0400-Q	TNC0600-Q	TNC1000-Q	TNC1600-Q
A	35	38	45	55
B	26	29	35	42
C	56	63.5	70	86.5
D	5.5	5.5	6.8	9
E1	16	17	18	21
E2	23.5	30	35.5	49
E3	39.5	47	53.5	70
F1 (Nominal × Pitch)	M26×1.5	M30×1.5	M36×1.5	M45×1.5
F2	20	24	30	39
Chamfer	C3	C3	C3	C4
Mass kg	0.36	0.46	0.68	1.16

- Notes
1. Material : S45C
 2. Mounting bolts are not provided. Prepare mounting bolts according to the mounting height using the C dimensions as a reference.

- High-Power Series
- Pneumatic Series
- Hydraulic Series
- Valve / Coupler Hydraulic Unit
- Manual Operation Accessories
- Cautions / Others

- Screw Locator
 - VXF
- Manual Expansion Locating Pin
 - VX
- Manifold Block
 - WHZ-MD
 - LZY-MD
 - LZ-MS
 - LZ-MP
 - TMZ-1MB
 - TMZ-2MB
 - DZ-M

- Manifold Block / Nut
 - DZ-R
 - DZ-C
 - DZ-P
 - DZ-B
 - LZ-S
 - LZ-SQ
 - TNZ-S
 - TNZ-SQ

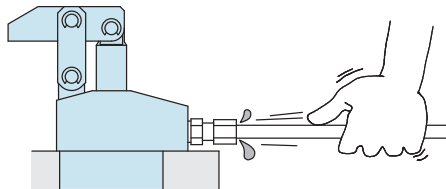
- Pressure Switch
 - JB
- Pressure Gauge
 - JGA/JGB
- Manifold
 - JX
- Coupler Switch
 - PS

- G-Thread Fitting

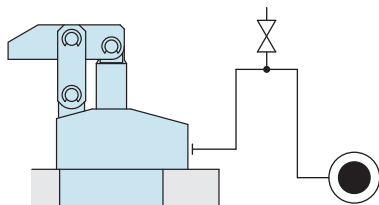
● Cautions

● Installation Notes (For Hydraulic Series)

- 1) Check the Usable Fluid
 - Please use the appropriate fluid by referring to the Hydraulic Fluid List.
- 2) Procedure before Piping
 - The pipeline, piping connector and fixture circuits should be cleaned by thorough flushing.
 - The dust and cutting chips in the circuit may lead to fluid leakage and malfunction.
 - There is no filter provided with Kosmek' s product except for a part of valves which prevents foreign materials and contaminants from getting into the circuit.
- 3) Applying Sealing Tape
 - Wrap with tape 1 to 2 times following the screw direction.
 - Pieces of the sealing tape can lead to oil leakage and malfunction.
 - In order to prevent a foreign substance from going into the product during the piping work, it should be carefully cleaned before working.
- 4) Air Bleeding of the Hydraulic Circuit
 - If the hydraulic circuit has excessive air, the action time may become very long. If air enters the circuit after connecting the hydraulic port or under the condition of no air in the oil tank, please perform the following steps.
 - ① Reduce hydraulic pressure to less than 2MPa.
 - ② Loosen the cap nut of pipe fitting closest to the clamp by one full turn.
 - ③ Wiggle the pipeline to loosen the outlet of pipe fitting.
Hydraulic fluid mixed with air comes out.



- ④ Tighten the cap nut after bleeding.
- ⑤ It is more effective to bleed air at the highest point inside the circuit or at the end of the circuit.
(Set an air bleeding valve at the highest point inside the circuit.)



5) Checking Looseness and Retightening

- At the beginning of the machine installation, the bolt and nut may be tightened lightly. Check the looseness and re-tighten as required.

● Hydraulic Fluid List

Maker	ISO Viscosity Grade ISO-VG-32	
	Anti-Wear Hydraulic Oil	Multi-Purpose Hydraulic Oil
Showa Shell Sekiyu	Tellus S2 M 32	Morlina S2 B 32
Idemitsu Kosan	Daphne Hydraulic Fluid 32	Daphne Super Multi Oil 32
JX Nippon Oil & Energy	Super Hyrando 32	Super Mulpus DX 32
Cosmo Oil	Cosmo Hydro AW32	Cosmo New Mighty Super 32
ExxonMobil	Mobil DTE 24	Mobil DTE 24 Light
Matsumura Oil	Hydol AW-32	
Castrol	Hyspin AWS 32	

Note As it may be difficult to purchase the products as shown in the table from overseas, please contact the respective manufacturer.

- High-Power Series
- Pneumatic Series
- Hydraulic Series
- Valve / Coupler Hydraulic Unit
- Manual Operation Accessories
- Cautions / Others

Cautions

- Installation Notes (For Hydraulic Series)
- Hydraulic Fluid List
- Notes on Hydraulic Cylinder Speed Control Circuit
- Notes on Handling
- Maintenance/Inspection
- Warranty

Company Profile

- Company Profile
- Our Products
- History

Index

- Search by Alphabetical Order

Sales Offices

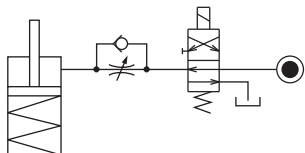
● Notes on Hydraulic Cylinder Speed Control Unit



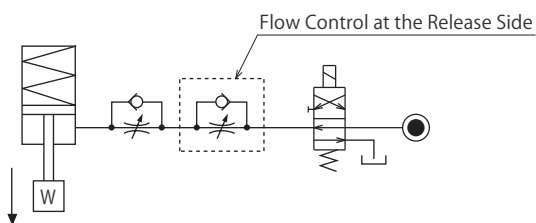
Please pay attention to the cautions below. Design the hydraulic circuit for controlling the action speed of hydraulic cylinder. Improper circuit design may lead to malfunctions and damages. Please review the circuit design in advance.

● Flow Control Circuit for Single Acting Cylinder

For spring return single acting cylinders, restricting flow during release can extremely slow down or disrupt release action. The preferred method is to control the flow during the lock action using a valve that has free-flow in the release direction. It is also preferred to provide a flow control valve at each actuator.



Accelerated clamping speed by excessive hydraulic flow to the cylinder may sustain damage. In this case add flow control to regulate flow. (Please add flow control to release flow if the lever weight is put on at the time of release action when using swing clamps.)



● Flow Control Circuit for Double Acting Cylinder

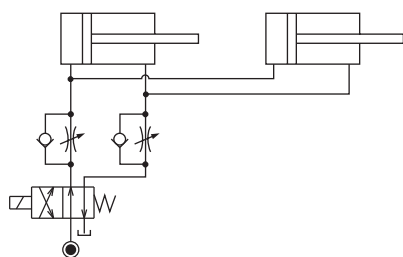
Flow control circuit for double acting cylinder should have meter-out circuits for both the lock and release sides. Meter-in control can have adverse effect by presence of air in the system.

However, in the case of controlling LKE, TMA, TLA, both lock side and release side should be meter-in circuit.

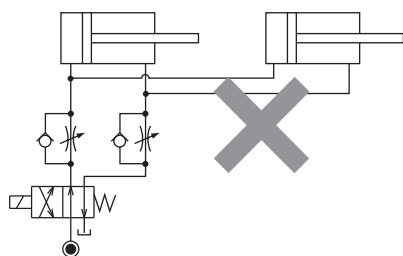
Refer to P.47 for speed adjustment of LKE.

For TMA and TLA, if meter-out circuit is used, abnormal high pressure is created, which causes oil leakage and damage.

【Meter-out Circuit】 (Except LKE/TMA/TLA)

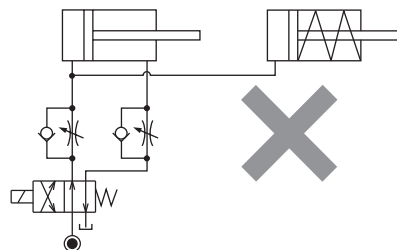


【Meter-in Circuit】 (LKE/TMA/TLA must be controlled with meter-in.)



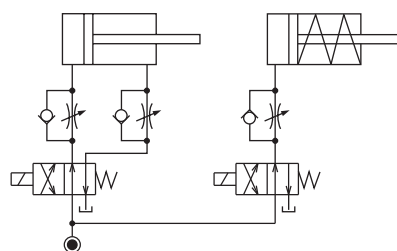
In the case of meter-out circuit, the hydraulic circuit should be designed with the following points.

- ① Single acting components should not be used in the same flow control circuit as the double acting components. The release action of the single acting cylinders may become erratic or very slow.

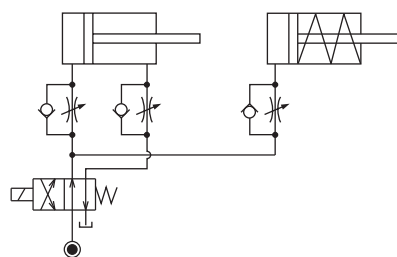


Refer to the following circuit when both the single acting cylinder and double acting cylinder are used together.

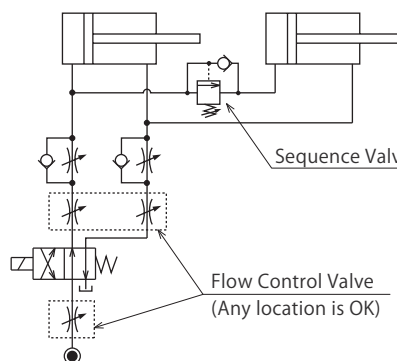
- Separate the control circuit.



- Reduce the influence of double acting cylinder control unit. However, due to the back pressure in tank line, single action cylinder is activated after double action cylinder works.



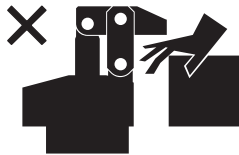
- ② In the case of meter-out circuit, the inner circuit pressure may increase during the cylinder action because of the fluid supply. The increase of the inner circuit pressure can be prevented by reducing the supplied fluid beforehand via the flow control valve. Especially when using sequence valve or pressure switches for clamping detection. If the back pressure is more than the set pressure then the system will not work as it is designed to.



● Cautions

● Notes on Handling

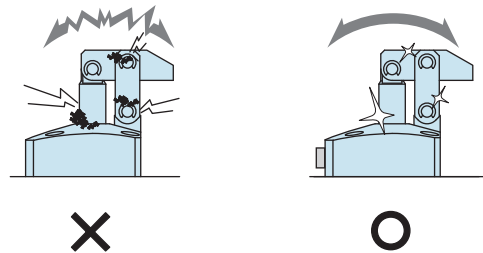
- 1) It should be handled by qualified personnel.
 - The hydraulic machine and air compressor should be handled and maintained by qualified personnel.
- 2) Do not handle or remove the machine unless the safety protocols are ensured.
 - ① The machine and equipment can only be inspected or prepared when it is confirmed that the preventive devices are in place.
 - ② Before the machine is removed, make sure that the above-mentioned safety measures are in place. Shut off the air of hydraulic source and make sure no pressure exists in the hydraulic and air circuit.
 - ③ After stopping the machine, do not remove until the temperature cools down.
 - ④ Make sure there is no abnormality in the bolts and respective parts before restarting the machine or equipment.
- 3) Do not touch clamps (cylinder) while clamps (cylinder) is working. Otherwise, your hands may be injured due to clinching.



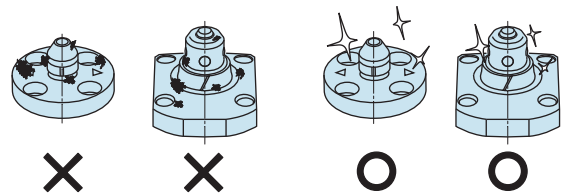
- 4) Do not disassemble or modify.
 - If the equipment is taken apart or modified, the warranty will be voided even within the warranty period.

● Maintenance and Inspection

- 1) Removal of the Machine and Shut-off of Pressure Source
 - Before the machine is removed, make sure that the above-mentioned safety measures are in place. Shut off the air of hydraulic source and make sure no pressure exists in the hydraulic and air circuit.
 - Make sure there is no abnormality in the bolts and respective parts before restarting.
- 2) Regularly clean the area around the piston rod and plunger.
 - If it is used when the surface is contaminated with dirt, it may lead to packing seal damage, malfunctioning, fluid leakage and air leaks.



- 3) Please clean out the reference surface regularly (taper reference surface and seating surface) of locating machine. (VS/VT/VL/VM/VJ/VK/WVS/WM/WK/VX/VXF)
 - Location products, except VX/VXF model, can remove contaminants with cleaning functions. When installing pallets make sure there is no thick sludge like substances on pallets.
 - Continuous use with dirt on components will lead to locating functions not work properly, leaking and malfunction.



- 4) If disconnecting by couplers on a regular basis, air bleeding should be carried out daily to avoid air mixed in the circuit.
- 5) Regularly tighten nuts, bolts, pins, cylinders and pipe line to ensure proper use.
- 6) Make sure the hydraulic fluid has not deteriorated.
- 7) Make sure there is smooth action and no abnormal noise.
 - Especially when it is restarted after left unused for a long period, make sure it can be operated correctly.
- 8) The products should be stored in the cool and dark place without direct sunshine or moisture.
- 9) Please contact us for overhaul and repair.

● Warranty

1) Warranty Period

- The product warranty period is 18 months from shipment from our factory or 12 months from initial use, whichever is earlier.

2) Warranty Scope

- If the product is damaged or malfunctions during the warranty period due to faulty design, materials or workmanship, we will replace or repair the defective part at our expense.

Defects or failures caused by the following are not covered.

- ① If the stipulated maintenance and inspection are not carried out.
- ② If the product is used while it is not suitable for use based on the operator's judgment, resulting in defect.
- ③ If it is used or handled in inappropriate way by the operator.
(Including damage caused by the misconduct of the third party.)
- ④ If the defect is caused by reasons other than our responsibility.
- ⑤ If repair or modifications are carried out by anyone other than Kosmek, or without our approval and confirmation, it will void warranty.
- ⑥ Other caused by natural disasters or calamities not attributable to our company.
- ⑦ Parts or replacement expenses due to parts consumption and deterioration.
(Such as rubber, plastic, seal material and some electric components.)

Damages excluding from direct result of a product defect shall be excluded from the warranty.

Sales Offices

Sales Offices across the World

Japan	TEL. +81-78-991-5162	FAX. +81-78-991-8787
Overseas Sales	KOSMEK LTD. 1-5, 2-chome, Murotani, Nishi-ku, Kobe-city, Hyogo, Japan 651-2241 〒651-2241 兵庫県神戸市西区室谷2丁目1番5号	
USA	TEL. +1-630-241-3465	FAX. +1-630-241-3834
KOSMEK (USA) LTD.	1441 Branding Avenue, Suite 110, Downers Grove, IL 60515 USA	
China	TEL.+86-21-54253000	FAX.+86-21-54253709
KOSMEK (CHINA) LTD. 考世美(上海)貿易有限公司	21/F, Orient International Technology Building, No.58, Xiangchen Rd, Pudong Shanghai 200122., P.R.China 中国上海市浦东新区向城路58号东方国际科技大厦21F室 200122	
Thailand	TEL. +66-2-715-3450	FAX. +66-2-715-3453
Thailand Representative Office	67 Soi 58, RAMA 9 Rd., Suanluang, Suanluang, Bangkok 10250, Thailand	
Taiwan (Taiwan Exclusive Distributor)	TEL. +886-2-82261860	FAX. +886-2-82261890
Full Life Trading Co., Ltd. 盈生貿易有限公司	16F-4, No.2, Jian Ba Rd., Zhonghe District, New Taipei City Taiwan 23511 台湾新北市中和區建八路2號 16F-4 (遠東世紀廣場)	
Philippines (Philippines Exclusive Distributor)	TEL.+63-2-310-7286	FAX. +63-2-310-7286
G.E.T. Inc, Phil.	Victoria Wave Special Economic Zone Mt. Apo Building, Brgy. 186, North Caloocan City, Metro Manila, Philippines 1427	
Europe (Europe Exclusive Distributor)	TEL. +43-463-287587-10	FAX. +43-463-287587-20
KOS-MECH GmbH	Schleppeplatz 2 9020 Klagenfurt Austria	
Indonesia (Indonesia Exclusive Distributor)	TEL. +62-21-5818632	FAX. +62-21-5814857
P.T PANDU HYDRO PNEUMATICS	Ruko Green Garden Blok Z- II No.51 Rt.005 Rw.008 Kedoya Utara-Kebon Jeruk Jakarta Barat 11520 Indonesia	

Sales Offices in Japan

Head Office	TEL.078-991-5115	FAX.078-991-8787
Osaka Sales Office	〒651-2241 兵庫県神戸市西区室谷2丁目1番5号	
Overseas Sales		
Tokyo Sales Office	TEL.048-652-8839	FAX.048-652-8828
	〒331-0815 埼玉県さいたま市北区大成町4丁目81番地	
Nagoya Sales Office	TEL.0566-74-8778	FAX.0566-74-8808
	〒446-0076 愛知県安城市美園町2丁目10番地1	
Fukuoka Sales Office	TEL.092-433-0424	FAX.092-433-0426
	〒812-0006 福岡県福岡市博多区上牟田1丁目8-10-101	

Global Network



Asia Detailed Map



● FOR FURTHER INFORMATION ON UNLISTED SPECIFICATIONS AND SIZES, PLEASE CALL US.
 ● SPECIFICATIONS IN THIS CATALOG ARE SUBJECT TO CHANGE WITHOUT NOTICE.

